



Architect's Newspaper, November 2, 2012 "Garten's Rippling New Bridge in Los Angeles," by Sam Lubell
<https://archpaper.com/2012/11/gartens-rippling-new-bridge-in-los-angeles/>

THE ARCHITECTS NEWSPAPER

Garten's Rippling New Bridge In Los Angeles

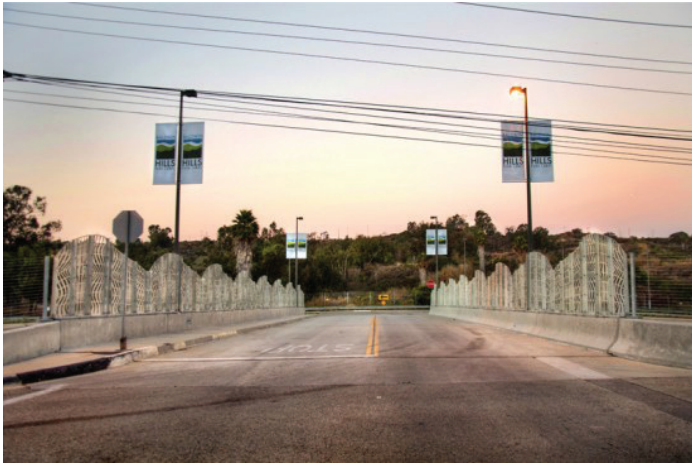
By SAM LUBELL • November 2, 2012

West



(Berg & Associates)

As we've [noted before](#), sculptor Cliff Garten is one of the lucky artists who gets to remake the urban landscape. His latest work is the Baldwin Hills Gateway, a 150-foot-long bridge that marks the entry into the Baldwin Hills Parklands, part of the sprawling [Kenneth Han State Recreation Area](#). The eight-foot-high rail, made of water jet cut and rolled anodized aluminum, is perforated by a rippling pattern inspired by the artist's survey of the entire park, creating interesting patterns of light and shadow on the bridge's surface. The project, funded by a grant from the [Baldwin Hills Conservancy](#) to the [Los Angeles Neighborhood Initiative](#), just opened last week.



(Berg&Associates)



(Berg & Associates)